

clever



14 Pomphlett Road

, Plymouth, PL9 7BL

£895 Per month

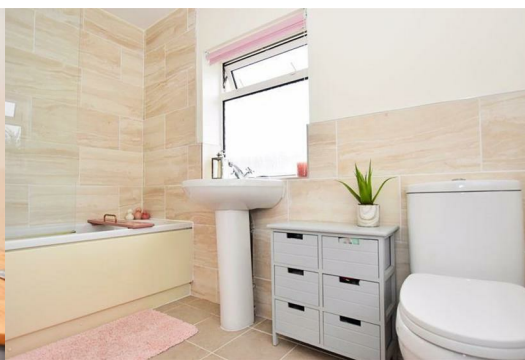


AVAILABLE NOW!

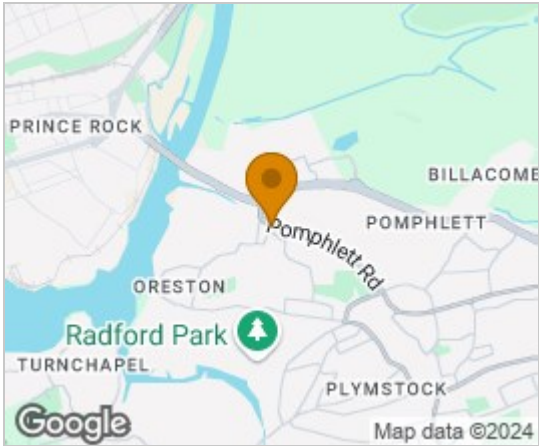
TWO BEDROOM FIRST FLOOR FLAT SITUATED IN A DESIRABLE LOCATION, CLOSE TO A WEALTH OF LOCAL AMENITIES AND PUBLIC TRANSPORT - BENEFITS FROM OFF STREET PARKING, GAS CENTRAL HEATING AND DOUBLE GLAZING. COUNCIL TAX BAND A. EPC D.

The property comprises Communal Entrance, Entrance Landing with access to large Loft, comfortable Living Room with bay window and feature fireplace, fitted Kitchen, two Bedrooms (master having spacious en-suite Bathroom) and further Shower Room....

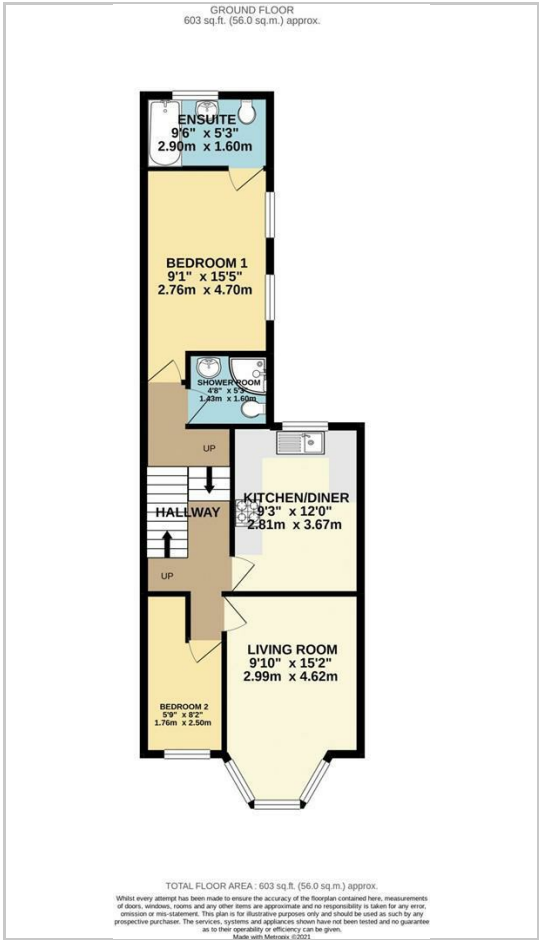
£895 pcm £895 Deposit.



Area Map



Floor Plans



Energy Efficiency Graph



These particulars, whilst believed to be accurate are set out as a general outline only for guidance and do not constitute any part of an offer or contract. Intending purchasers should not rely on them as statements of representation of fact, but must satisfy themselves by inspection or otherwise as to their accuracy. No person in this firms employment has the authority to make or give any representation or warranty in respect of the property.